

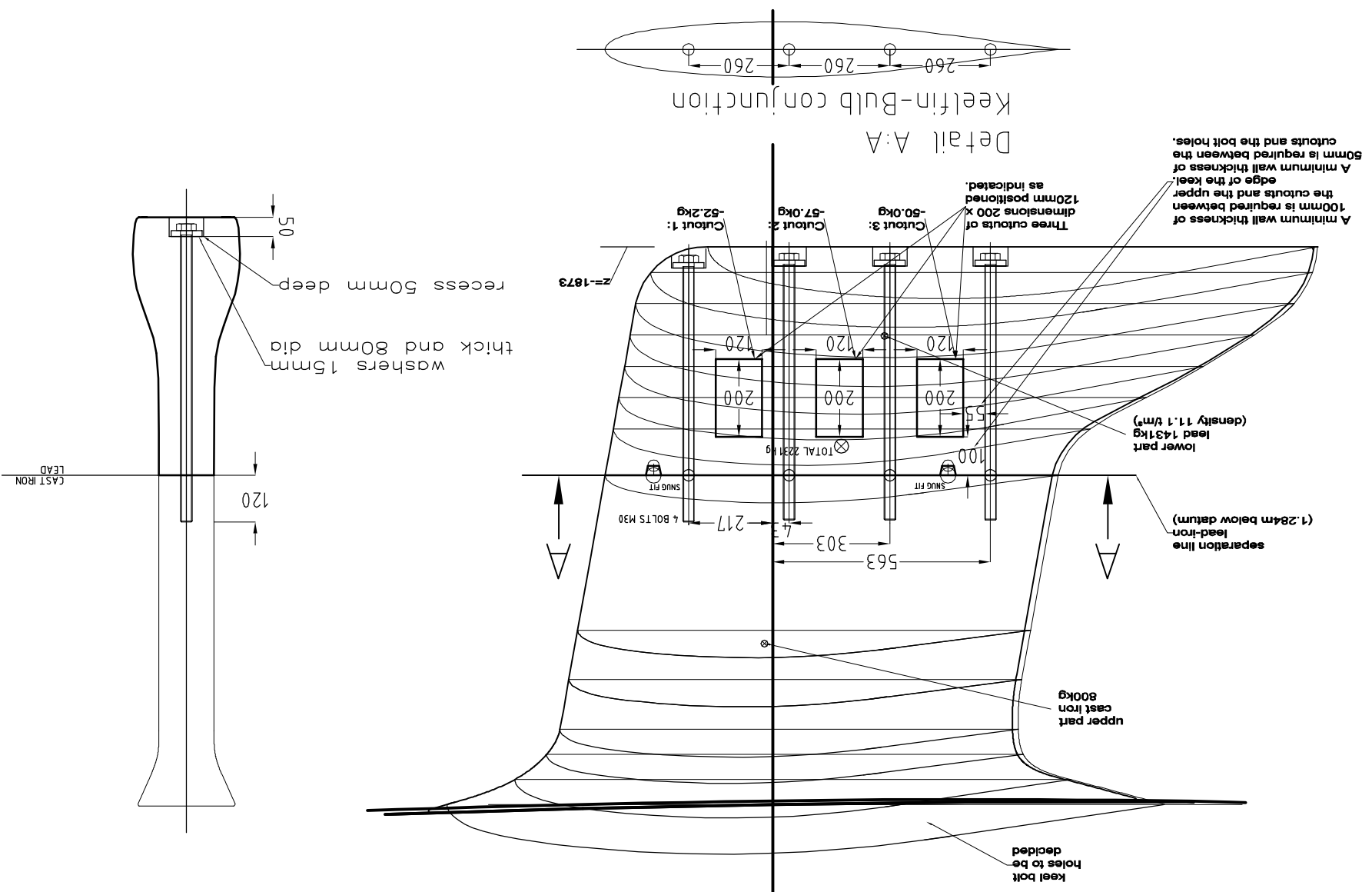
ALL DIMENSIONS IN MM.
DUE TO BUILDING TOLERANCES ALL DIMENSIONS GIVEN ON THIS DRAWING ARE TO BE CHECKED ON THE BOAT!

Judel/vrolijk & co - PROPRIETARY
THE INFORMATION CONTAINED HEREON IS STRICTLY CONFIDENTIAL AND IS SUBJECT TO A CONFIDENTIALITY AGREEMENT AND A PERSON USING OR DISCLOSURE THE INFORMATION CONTAINED HEREON IN BREACH OF SUCH AGREEMENT SHALL BE SUBJECT TO AN ACTION TO ENJOIN SUCH USE AND A SUIT FOR DAMAGES.

GERMANY
D-27572 BREMERHAVEN
AM SEEDICH 45
TELEFON +49(0)471 97 123 95
TELEFAX +49(0)471 97 123 96
E-mail: info@judel-vrolijk.com

Hanse 370
construction keel - boat #001
DRAWING NUMBER HA37-keel-CKO-first

ISSUE	MODIFICATION	DATE	DRAWN BY	APPROVED
1	first issue	13-07-05	rk/ps	



The geometrie of the keel/in
'HA370-keel/in.IGS'
can be seen from the IGES-file
KEEL T = 1873 mm
WEIGHT
FIN CAST IRON approx. 800 KG
BULB LEAD approx. 1431KG
MATERIALS
LEAD WITH 3% ANTIMON
BOLTS V4A TENSILE STRENGTH MIN 235 N/QMM
CAST IRON TENSILE STRENGTH MIN 80 N/mm²

NOTE: Keel taken from HA371
deep keel. The top surface must
be adapted to the new hull shape.
For geometric information refer
to HA36CCA5.dwg

NOTE: Keel bolts
not final!

X Position: 5000

DWL