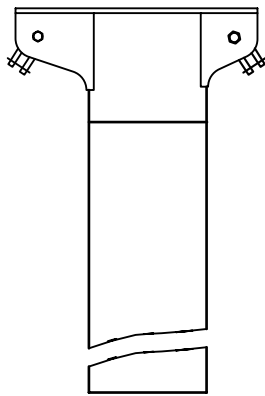


SPARCRAFT MASTHEADS

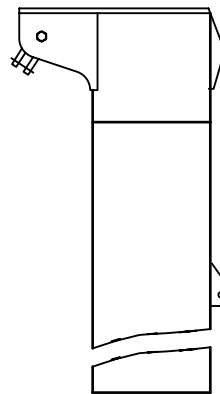
- All our mastheads are made from extruded sections, and designed specially for each section;
 - All our mastheads are welded to the section before anodizing, which makes for better performance of the mast (longer durability and better tuning)w;
 - Different types of mastheads are available depending on the sections: mast head rigs or fractional rig, tapered or not tapered;
- The furling masts are delivered without a taper.

Mastheads configurations



Mast head rig

Set for 4 halyards (main halyard, main sheet topping lift, and two jib halyards).
Optional: single or double external spi attachment

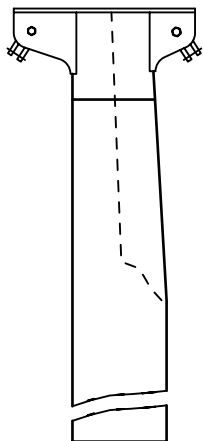


Fractional rig

Set for 4 halyards (main halyard, main sheet topping lift, and two spinnaker halyards).

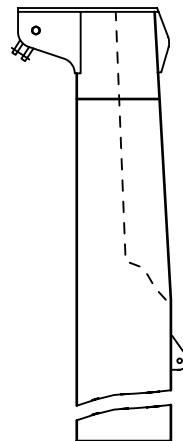
The taper :

- Two cuts are made at the top of the mast, with a comma-shape which keeps the aft face of the mast straight. The taper minimizes the weight at the top and lowers the centre of gravity. It is also an esthetical element and makes for better control of the longitudinal curve of the mast.
- The taper is supplied polished or non-polished.



Mast head rig with taper

Same configuration as above, but tapered.



Fractional rig with taper

Same configuration as above, but tapered

Mashead toggles

- The toggles are adapted to the mastheads sections (N°3 ou N°4) and to the diameters of the wires.

Toggles	Mastheads N°4			Mastheads N°3				
ø pin (mm)	ø 6	ø 8	ø 10	ø 10	ø 12	ø 14*	ø 16	ø 18
ø wire (mm)	ø 3	ø 4 and ø 5	ø 5 and 6	ø 5 and 6	ø 6, ø 7 and ø 8	ø 10*	ø 10	ø 12



* Specific use for ø 14 mm pin